

WINKEL Ready Track

- Stahlprofilbauweise mit WINKEL-Führungen, wahlweise Stahl- oder Polyamid-Laufrollen
- High Dynamic, High Precision-Ausführung mit AC- oder Servomotoren
- Universell geeignet zum Aufbau ihrer Fördertechnik

Mögliche Aufbauten

- Hubsysteme
- Hubsysteme mit Querhub
- Teleskopgabeln mit Exzenterhubtisch
- Ketten- oder Rollenförderer

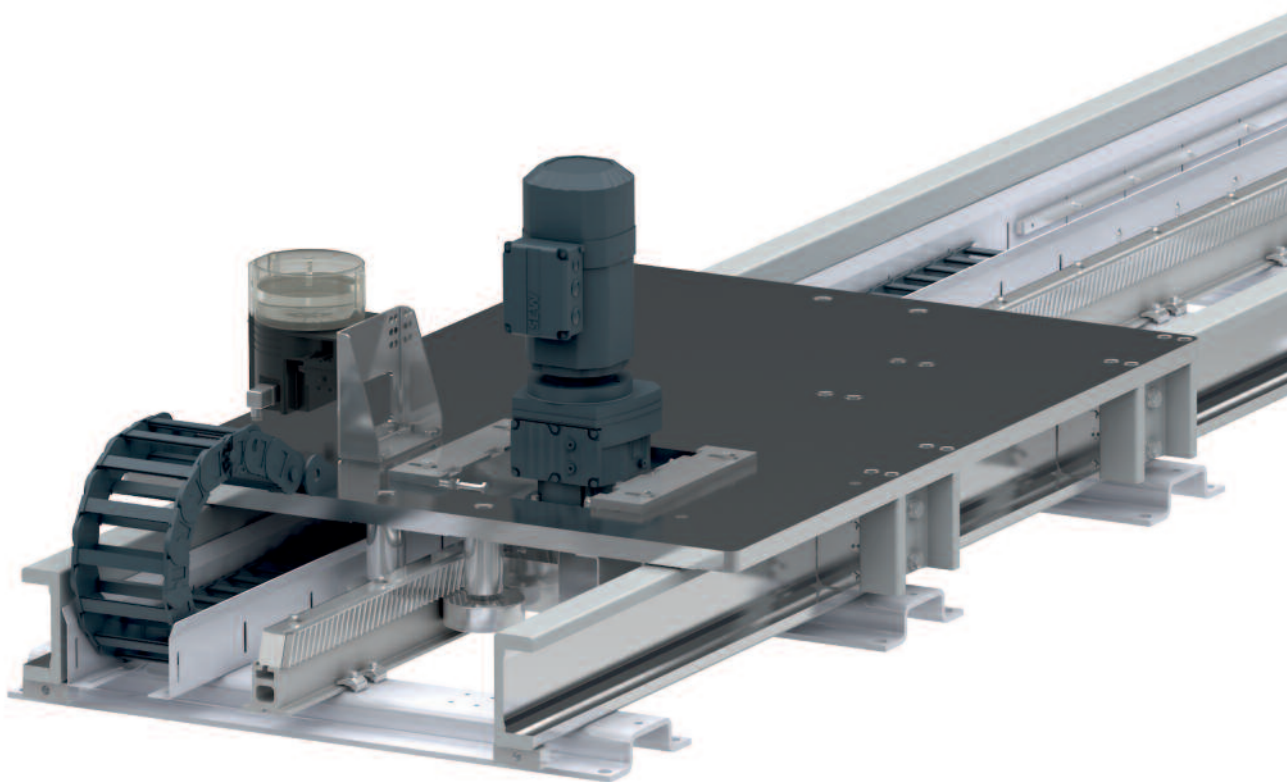
WINKEL Ready Track

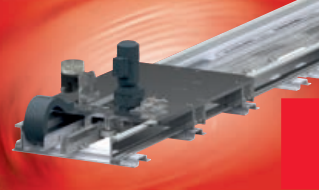
- steel design with WINKEL linear guides, optionally steel or polyamide bearings
- High Dynamic, High Precision Version with AC or Servo drives
- universal design suitable to integrate your conveyor technology

Possible constructions

- lift systems
- lift systems with side stroke
- telescopic forks with eccentric lifting table
- chain or roller conveyor

NEU
NEW





READY TRACK | READY TRACK

WINKELReadyTrack

Technische Daten

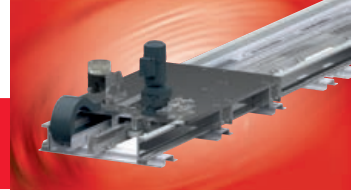
WINKEL ReadyTrack

Technical data

Typ/Type	RTP-5	RTP-8	RTS-3	RTS-5	RTS-6	RTS-8
Laufrolle/Bearing	Polyamid/Polyamide	Polyamid/Polyamide	Stahl / Steel	Stahl / Steel	Stahl / Steel	Stahl / Steel
Last/load vertikal Fz	10 kN 1	20 kN	15 kN	20 kN	30 kN	50 kN
Last/load horiz. Fy	1 kN	1 kN	1 kN	1 kN	1 kN	1 kN
Moment max. Mx	4100 Nm	17200 Nm	12500 Nm	16500 Nm	25000 Nm	43000 Nm
Moment max. My	3900 Nm	15000 Nm	12000 Nm	15500 Nm	23000 Nm	38000 Nm
Moment max. Mz	1500 Nm	1500 Nm	1500 Nm	1500 Nm	1500 Nm	1500 Nm
Bodenbelastung/Floor load	17 kN/m ²	28 kN/m ²	22 kN/m ²	27 kN/m ²	38 kN/m ²	60 kN/m ²
Geschw./speed v1	1 m/s	1 m/s	0,5 m/s	0,5 m/s	0,5 m/s	0,5 m/s
Beschl./acc. a1	1 m/s ²	1 m/s ²	0,5 m/s ²	0,5 m/s ²	0,5 m/s ²	0,5 m/s ²
Leistung/power	2,2 kW	4 kW	1 kW	1,2 kW	1,6 kW	3 kW
Getriebe/gear type	Stirnrad/spur gear	Stirnrad/spur gear	Stirnrad/spur gear	Stirnrad/spur gear	Stirnrad/spur gear	Stirnrad/spur gear
SEW type	RF47/RF57	RF47/RF57	RF47/RF57	RF47/RF57	RF47/RF57	RF47/RF57
Höhe Antrieb/height drive H	600	540	530	520	550	510
Geschw./speed v2	2 m/s	2 m/s	1 m/s	1 m/s	1 m/s	1 m/s
Beschl./acc. a2	2 m/s ²	1 m/s ²	1 m/s ²	1 m/s ²	1 m/s ²	1 m/s ²
Leistung/power	8,5 kW	14 kW	3 kW	4 kW	5,5 kW	8,5 kW
Getriebe/gear type	Planeten/planetary	Planeten/planetary	Stirnrad/spur gear	Stirnrad/spur gear	Stirnrad/spur gear	Stirnrad/spur gear
SEW type	PSF621	PSF621	RF47/RF57	RF47/RF57	RF57	RF67
Höhe Antrieb/height drive H	520	430	670	630	590	650
Geschw./speed v3	3 m/s	3 m/s	2 m/s	2 m/s	2 m/s	2 m/s
Beschl./acc. a3	3 m/s ²	1,5 m/s ²	2 m/s ²	2 m/s ²	2 m/s ²	1 m/s ²
Leistung/power	18,5 kW	32 kW	11 kW	14 kW	19 kW	32 kW
Getriebe/gear type	Planeten/planetary	Planeten/planetary	Planeten/planetary	Planeten/planetary	Planeten/planetary	Planeten/planetary
SEW type	PSF621	PSF721	PSF621	PSF621	PSF721	PSF721
Höhe Antrieb/height drive H	580	490	560	520	550	490
Drehgeber/Encoder	SSI / Hyperface	SSI / Hyperface	SSI / Hyperface	SSI / Hyperface	SSI / Hyperface	SSI / Hyperface
Zahnrad/pinion	m5/23 Zähne/teeth	m5/23 Zähne/teeth	m5/23 Zähne/teeth	m5/23 Zähne/teeth	m5/23 Zähne/teeth	m5/23 Zähne/teeth
Zahnstange/rack	m5 schräg/hel.cut	m5 schräg/hel.cut	m5 schräg/hel.cut	m5 schräg/hel.cut	m5 schräg/hel.cut	m5 schräg/hel.cut
WINKEL Profil/profile	PR 5 NbV	PR 8 NbV	PR 3 NbV	PR 5 NbV	PR 6 NbV	PR 8 NbV
WINKEL Rollen/bearing	PA 125	PA 1800	PR 2.058	PR 2.062	PR 2.063	PR 4.085
Endschalter/switch	2 x Schmersal	2 x Schmersal	2 x Schmersal	2 x Schmersal	2 x Schmersal	2 x Schmersal
Energiekette/energy chain	Igus 3400.150.150	Igus 3400.150.150	Igus 3400.150.150	Igus 3400.150.150	Igus 3400.150.150	Igus 3400.150.150
Dübelsatz/anchor bolt set	500.300.999	500.300.999	500.300.999	500.300.999	500.300.999	500.300.999
Schmieranlage/lubrication	051.100.000	051.100.000	051.100.000	051.100.000	051.100.000	051.100.000
Lackierung/paint	RAL 7024 grau/grey	RAL 7024 grau/grey	RAL 7024 grau/grey	RAL 7024 grau/grey	RAL 7024 grau/grey	RAL 7024 grau/grey

1) RTP-5 max. Last Fz 10 kN nur genau zentrisch auf Fahrwagen zulässig.
 Alle Kräfte und Momente müssen geometrisch addiert werden.
 Bohrbild Fahrwagen bei Bestellung angeben.
 Max. Umgebungstemperatur 40 °C.
 Energiekette mit 5 Trennstegen.
 Dübelsatz bestehend aus 14 Klebeankern mit Unterlegblechen.
 Andere Lackierung auf Anfrage.

1) RTP-5 max. load Fz 10 kN only in center of carriage possible.
 All forces and moments have to be geometrically added.
 Please define thread holes in carriage with order.
 Max. working temperature 40 °C.
 Energy chain with 5 separators.
 Chemical anchor bolt set, 14 anchors with shims.
 Other paints on request.

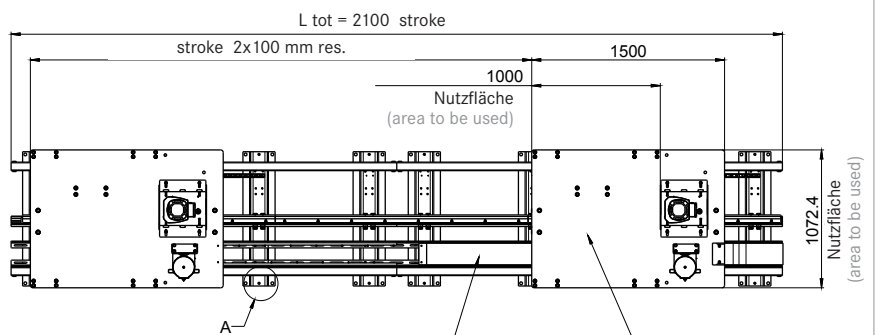
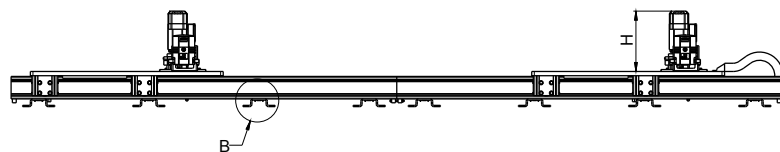
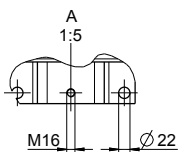
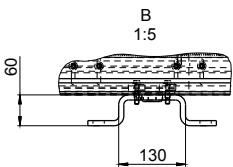
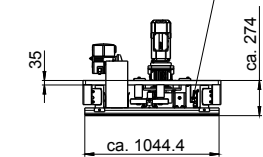


Typ RTP 5
Type RTP 5



WINKEL Rollen in Polyamid
WINKEL bearings in Polyamide

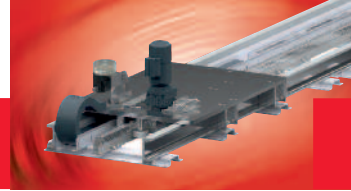
Rollenhebelschalter
2x Endlagen
limit switch
2x for end positioning
Schmersal-
Z4V7H 336-11Z 2138



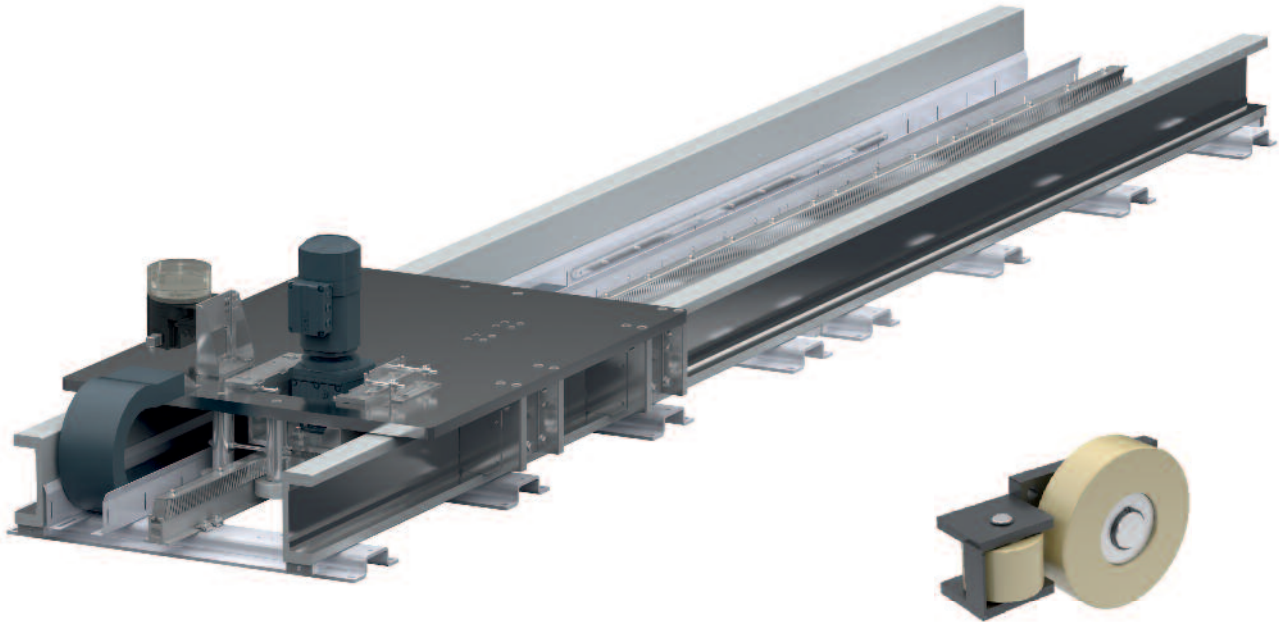
energy chain
□ 150 x 45 innen

nicht schweißen
(do not weld)
(only screw coupling)

Technische Daten siehe Seite 381
Technical data see page 381

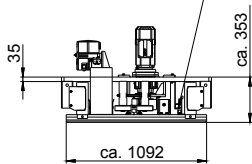


Typ RTP 8
Type RTP 8

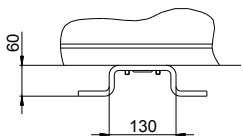


WINKEL Rollen in Polyamid
WINKEL bearings in Polyamide

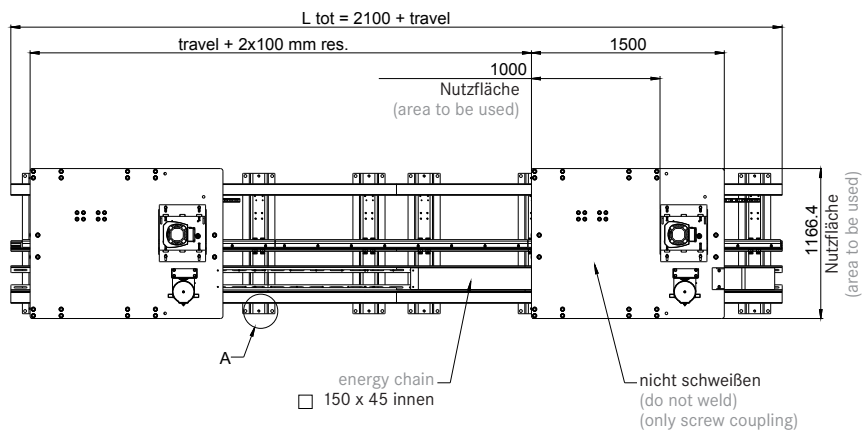
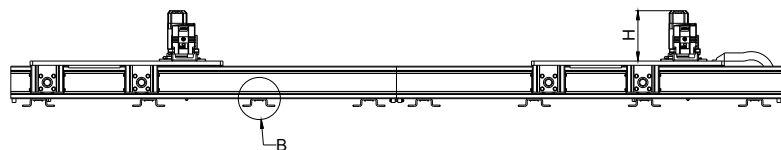
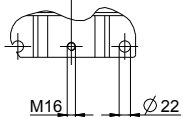
Rollenhebelschalter
2x Endlagen
limit switch
2x for end positioning
Schmersal-
Z4V7H 336-11Z 2138



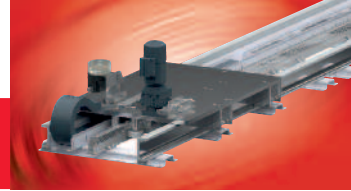
B
1:5



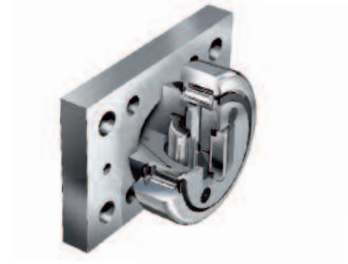
A
1:5



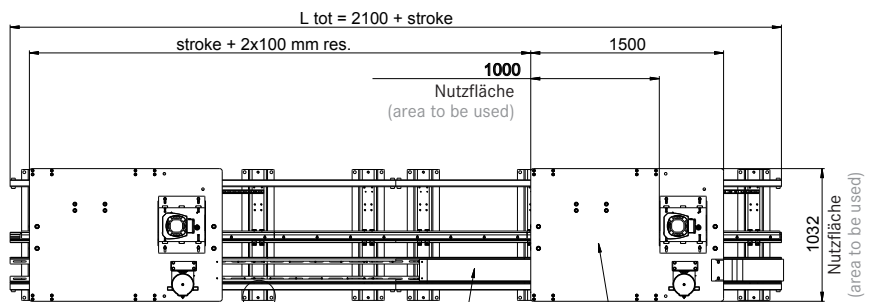
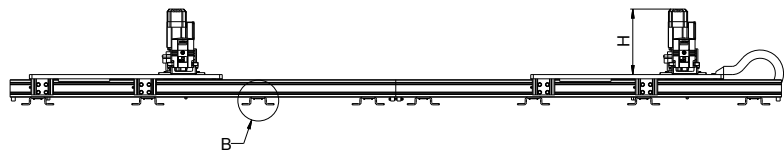
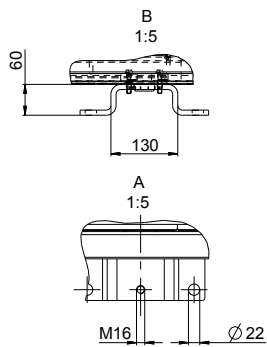
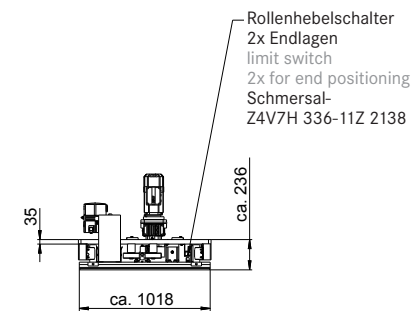
Technische Daten siehe Seite 381
Technical data see page 381



Typ RTS 3
Type RTS 3

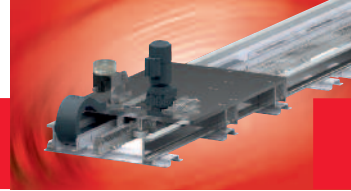


WINKEL Rollen in Stahl
WINKEL bearings in steel

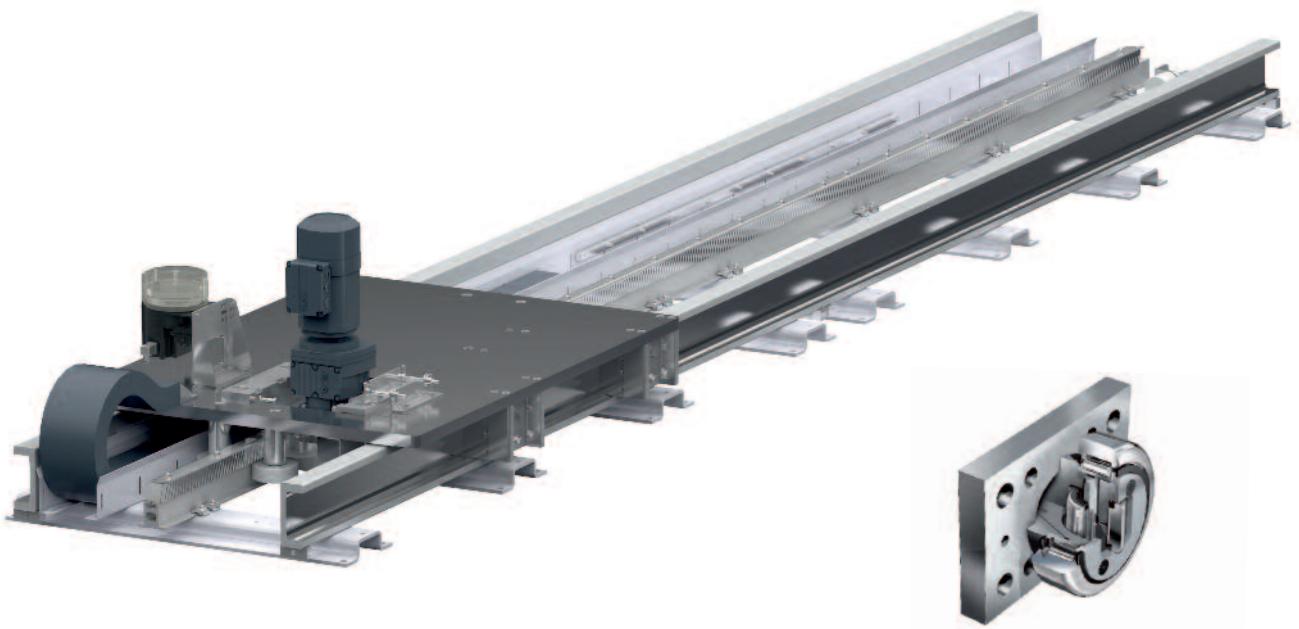


energy chain
□ 150 x 45 innen
nicht schweißen
(do not weld)
(only screw coupling)

Technische Daten siehe Seite 381
Technical data see page 381

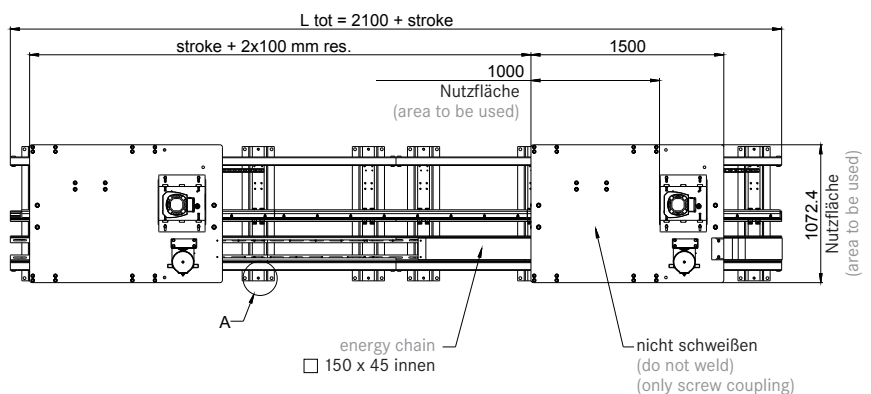
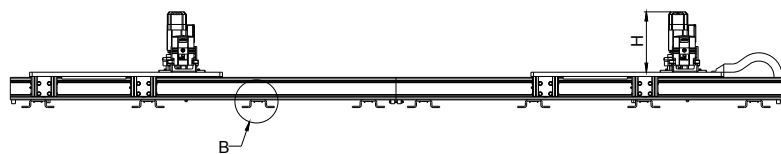
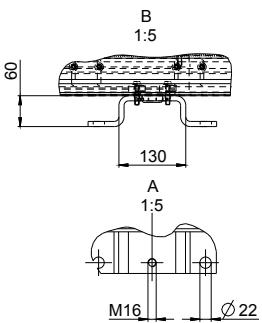
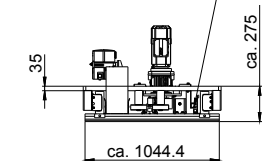


Typ RTS 5
Type RTS 5

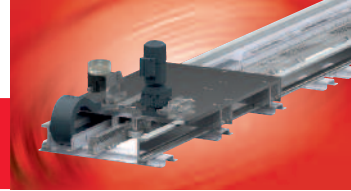


WINKEL Rollen in Stahl
WINKEL bearings in steel

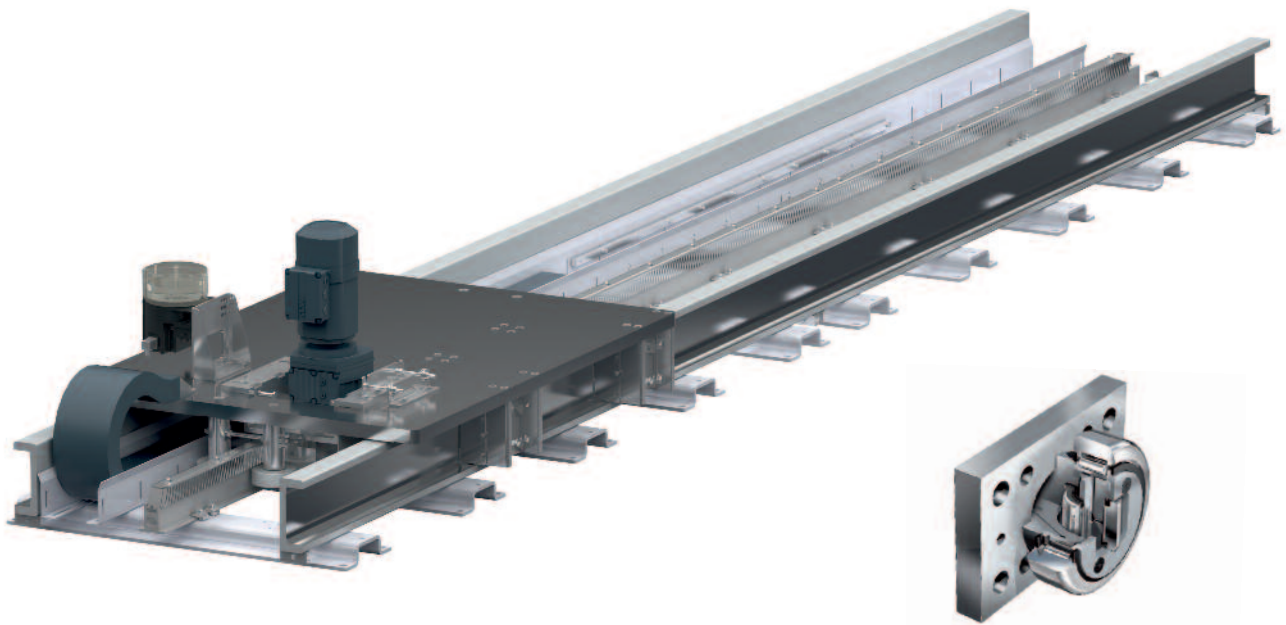
Rollenhebelschalter
2x Endlagen
limit switch
2x for end positioning
Schmersal-
Z4V7H 336-11Z 2138



Technische Daten siehe Seite 381
Technical data see page 381

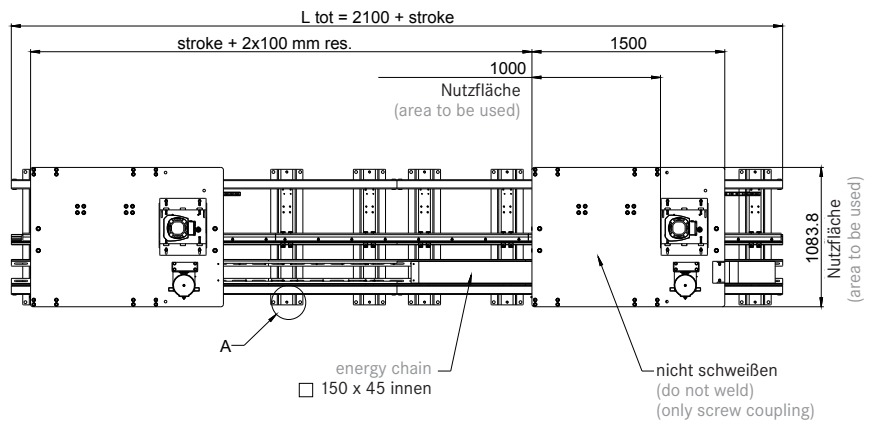
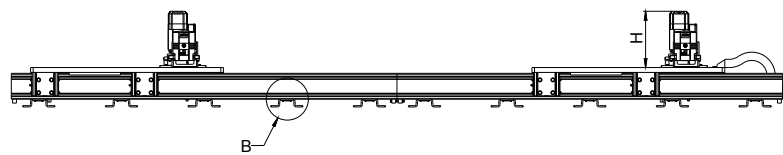
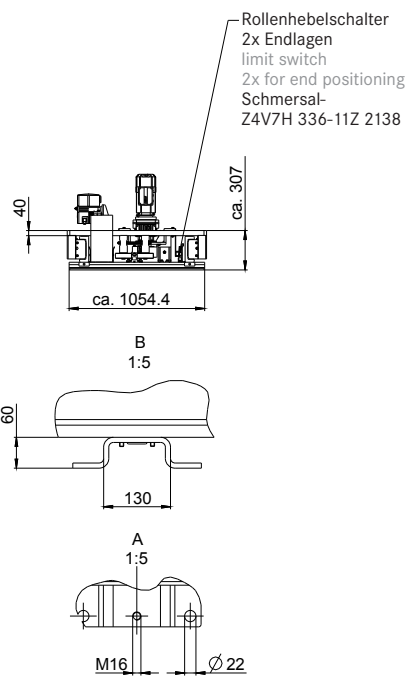


Typ RTS 6
Type RTS 6

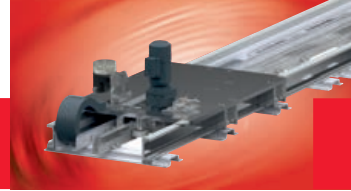


WINKEL Rollen in Polyamid
WINKEL bearings in Polyamid

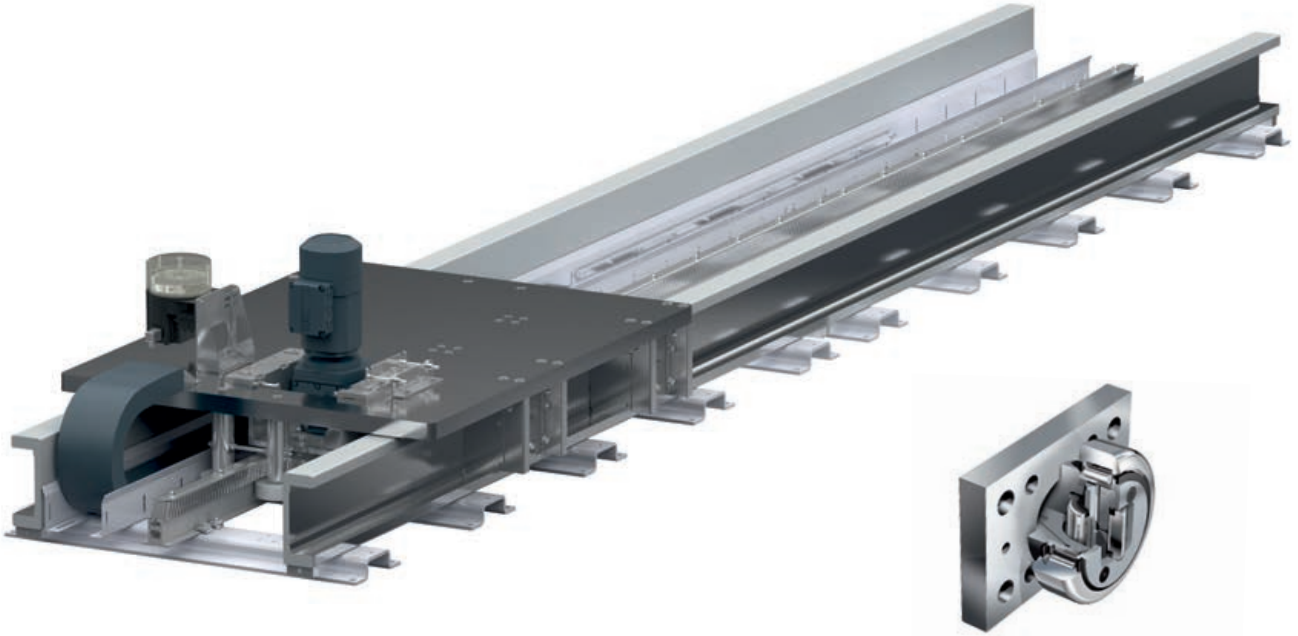
WINKEL Rollen in Stahl
WINKEL bearings in steel



Technische Daten siehe Seite 381
Technical data see page 381

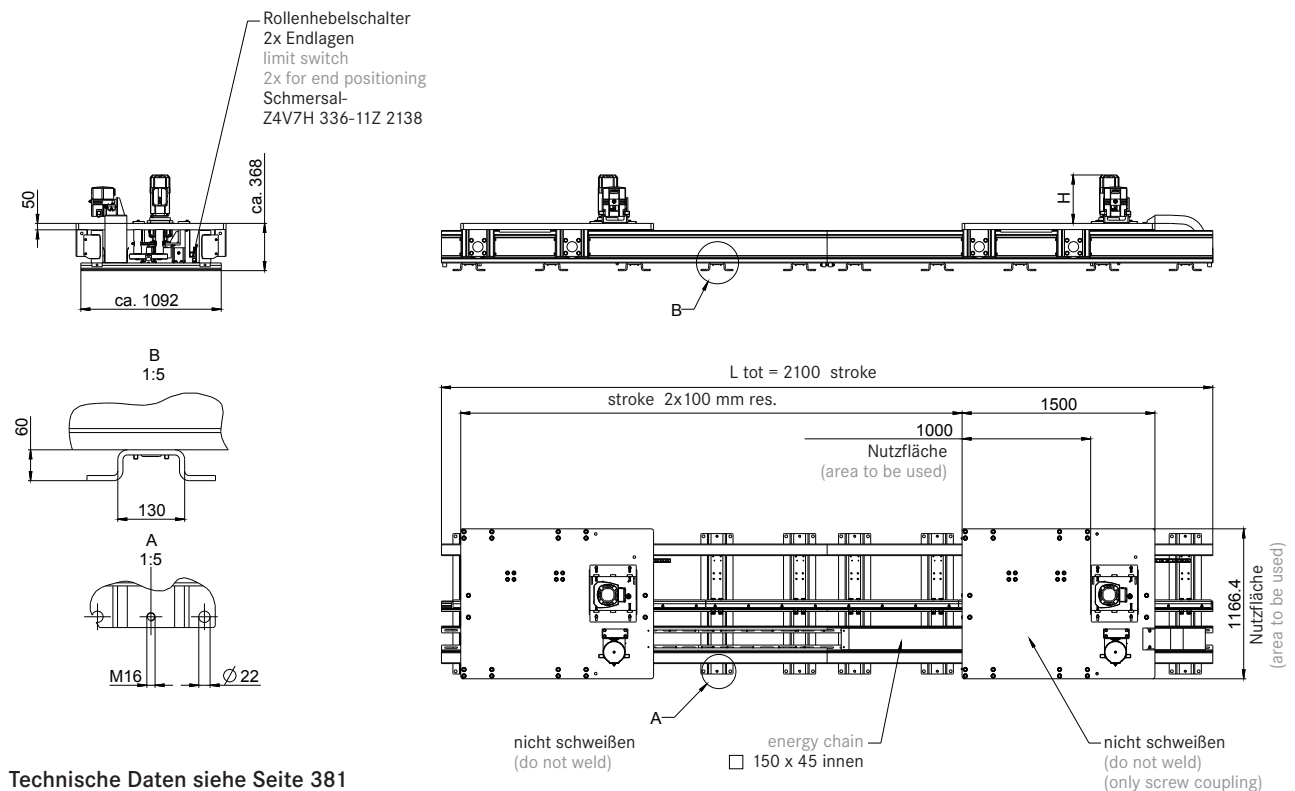


Typ RTS 8
Type RTS 8



WINKEL Rollen in Polyamid
WINKEL bearings in Polyamide

WINKEL Rollen in Stahl
WINKEL bearings in steel



Technische Daten siehe Seite 381
Technical data see page 381